



Parish



Profile



AT THE CENTRE OF
OUR PARISH



Welcome

St Mary's has been a centre for worship in the parish for more than 100 years. From small beginnings, we have grown into a large and enthusiastic congregation.

Our minister has retired after 27 years of dedicated ministry to the congregation and the parish. We are now seeking a minister to guide us as we move forward to new challenges.

This profile presents a detailed picture of life at St Mary's; however, the key features of our church are as follows:



- Well-attended Sunday services held in an impressive building
- A wide range of organisations and activities for all, from Toddlers to Senior Citizens
- A Kirk Session active in every aspect of Church life
- A broad church, inclusive in approach and attitude; our services of worship and our organisations are open to all
- Members at every age and stage of life
- A committed congregation that enjoy both traditional and more modern worship
- A large, lively and well supported Junior Church
- A vibrant church where people of all generations within the community celebrate and experience God's love.

We hope that this profile will provide a picture of the church and the community that surrounds it.



Our Church

The story of St Mary's is of a congregation which has grown from the small group that met first in a miner's cottage in Watsonville at the dawn of the 20th century, then briefly in the 'Tin Kirk' in Watson Street, to the large congregation which now meets for worship Sunday by Sunday in the present building in Avon Street. Our church, designed by Mr McGregor Chalmers, was built and dedicated in 1914, so 2014 was a year of joyous activity for the congregation as we celebrated a century of worship in our magnificent building.

St Mary's is located in a residential area of Motherwell that has seen growth in homes over several decades. With an increasing membership, there was a lack of accommodation for mid-week activities, so in the 1950s and 1960s 2 halls were added, together with a kitchen, office, conference room and coffee bar. All of this space is still in regular use for the many organisations that are part of church life in St Mary's.

More recent projects have included an enlarged kitchen and office, disabled access and toilet, renovation of the church roof and the installation of an Allen digital organ. As a legacy of the centenary, the entrance to the halls has been enhanced, with easier access for prams and buggies, and the decoration and sound systems in the main hall have been improved, creating an enhanced environment for meetings and concerts.

As we move forward from the centenary, we look back at all of these changes while we look forward to the future. Motherwell is a changed town. The traditional industries of coal and steel, whose growth triggered the birth of St Mary's, have largely gone. New housing has increased the size of the parish. Within these changes a constant remains: St Mary's at the centre of the community, with Christian worship Sunday by Sunday and Christian living day by day.



Our Parish

St Mary's is situated in a residential district of Motherwell, bounded on the southern edge by the River Clyde. There has been a steady growth of house building over the past 50 years and there are now 1700 homes in the parish, with the potential for a small increase. The parish is a mature, established community.

There are good travel and transport links from Motherwell. It is adjacent to the M74 for travel south or north, linking to the M8 and M80. Express bus services give fast travel to Glasgow for city centre facilities: work; shops; theatres; colleges and universities.

From Motherwell Station there are regular trains to both Glasgow and Edinburgh, and also services to London.

Schools are a few minutes' walk from the manse: Ailsa Nursery; Ladywell Primary; Dalziel High School. The latter is within the parish and the minister of St Mary's is the school chaplain.

Strathclyde Country Park, seen worldwide during the Commonwealth Games Triathlon, offers walking, cycling, football and water sports. The Clyde Walkway leads to the RSPB Baron's Haugh Reserve and Dalzell Estate. Ravenscraig Regional Sports Centre has sports facilities on an impressive scale: sports hall, gym, indoor athletics and pitches.



Strathclyde Country Park



Dalzell Estate

Worship

Our morning service takes place at 11 am each Sunday throughout the year. The congregation welcomes the children of the Junior Church for the first part of the service, before they leave together to head to the halls for their activities. We are very fortunate to have an enthusiastic and talented organist and choirmaster, who along with our 20 strong choir lead the praise and hymns, from CH4, Mission Praise and SOGP, Sunday by Sunday. They often contribute an anthem during the service. Members of the congregation may gather in the Avon Hall after morning worship to continue fellowship with tea and coffee.

Holy Communion is celebrated 5 times during the year in February, June, September, Advent, and Easter.

Joint services take place in the town during Holy Week, and St Mary's was the host church in 2014. Members of the congregation also take part in the World Day of Prayer services and in the local Remembrance Service at Dalziel High School.

We have a busy calendar and as the weeks and months pass by, we mark many special Sundays. Often these Sundays take the form of a family service, when our Praise Group is involved. Special services include: Easter lessons and carols; Palm Sunday; Easter Morning Dawn service; Bible Sunday; Christian Aid Sunday; Junior Church end of term; Harvest; dedication services for organisations; Remembrance Sunday; Christmas gift service; Christmas lessons and carols and Nativity Sunday.

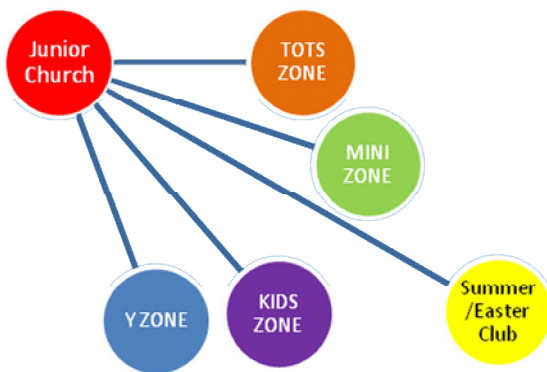
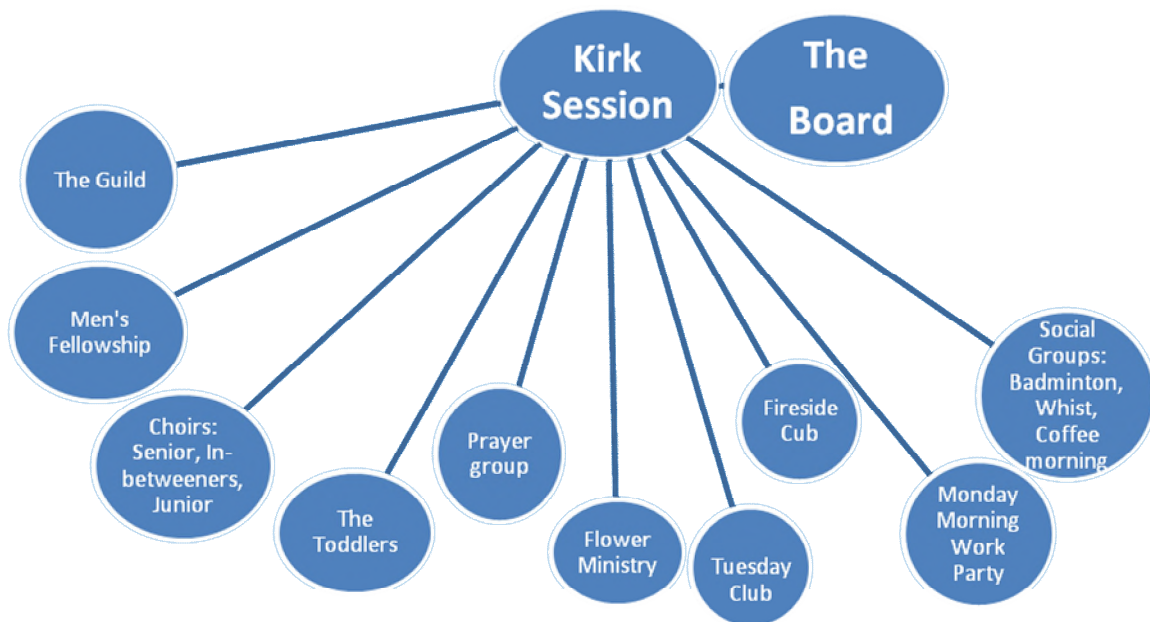
These special mornings give us an opportunity to share together in various forms of worship and praise, as we come together as a congregation to serve, praise, worship and thank God.



Organisations

St Mary's has many organisations for the wide range of ages who are welcomed into the family atmosphere of our church. They provide a source of fellowship, friendship, support, activities and a vehicle to give service.

The organisations are led by a large group of enthusiastic and committed leaders. These organisations ensure that every day of the week, morning, afternoon and evening there is always a buzz in our halls. The Guild has 70 members, the Men's Fellowship 30 members. These numbers reflect the involvement of members of the congregation and friends from the local community in the life of our church.



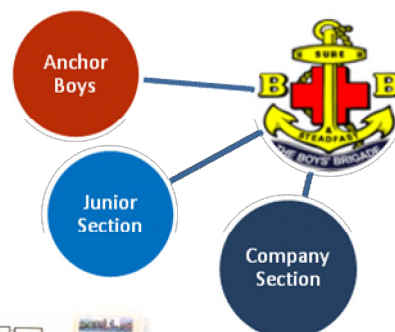
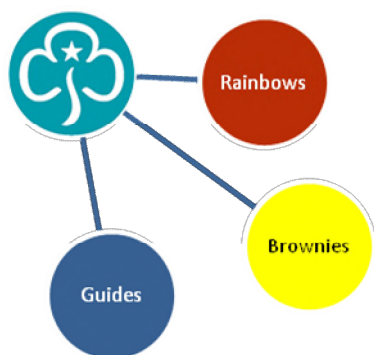
There are over 74 children and 18 leaders in the various age groups of our Junior Church. They attend the beginning of each service for the children's address before leaving to follow a programme of bible-based activities.

Tots	Babies to 3 years
Mini Zone	3-7 years
Kids Zone	P3-P7
Y Zone	S1-S6

The 5 days of the Summer Club are very busy with up to 150 children from the community singing, dancing, and crafting around a theme with a Christian message. A similar event sometimes takes place at Easter.

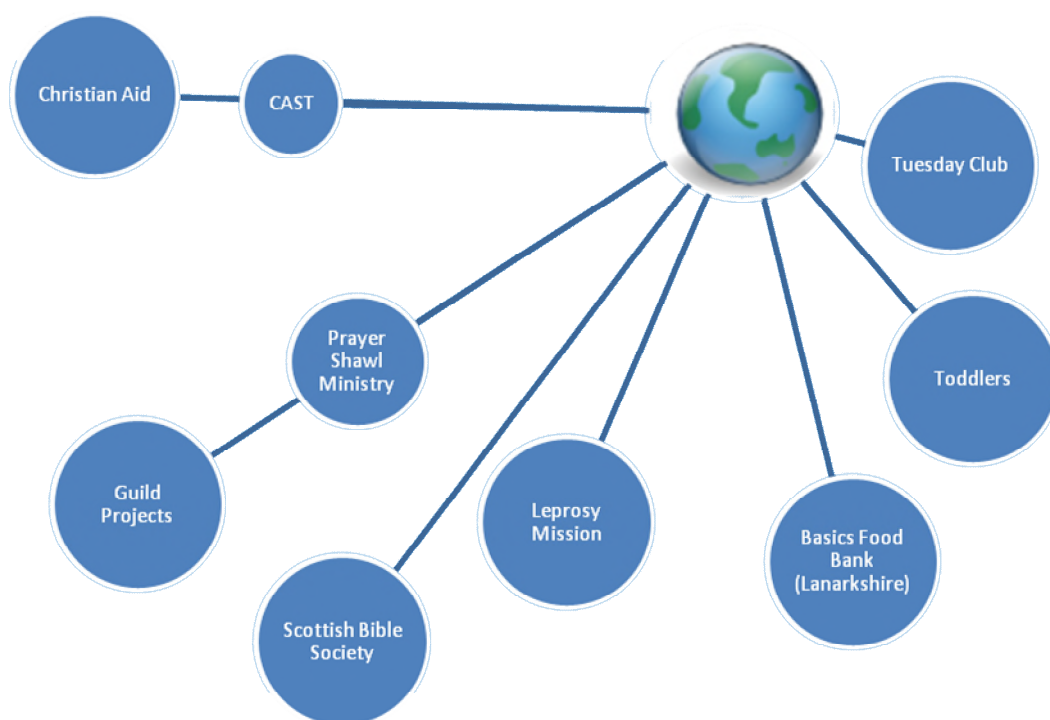


There are 120 boys and 25 leaders in the Anchor, Junior and Company sections of the Boys' Brigade. Girlguiding is represented by 127 girls and 37 leaders in 2 Rainbow, 3 Brownie and 2 Guide units. Both organisations enthusiastically follow national programmes which make a positive contribution to a young person's life. They build friendships, gain valuable life skills and make a positive difference to their lives and their communities.



Outreach

The church and its organisations support charities, locally and internationally. Some are mentioned below. CAST is made up of a group of young people in our congregation who support the work of Christian Aid in our church. Retiring offerings are made to support other national and international charities, eg Al Shurooq School for Blind Children, Bethlehem.



As part of our centenary celebrations we made donations in 2014 to Help for Heroes, Yorkhill Children's Charity, Lanarkshire Cancer Care Trust, Motherwell District Women's Aid and Alzheimer's Scotland.

On Harvest Thanksgiving Sunday, the chancel is filled with gifts of food. These are given to Loaves and Fishes, Glasgow, to support their work helping people in need.

At Advent, our gifts in the chancel are colourfully wrapped presents for children, which are distributed to local families via support charities.

Each month, a team delivers a Parish Leaflet to homes in the parish. This has news about forthcoming services and special events, together with contact information for anyone seeking pastoral support.

Our church building, and the minister as chaplain are hosts to the Dalziel High School services. These include a Christmas and Easter Service and an End of Term Prize- giving.

Care and Fellowship

The safeguarding team is responsible for all matters relevant to the protection of children and vulnerable adults throughout the congregation and organisations to ensure their safety and welfare.

Visitors from the Fireside Club make regular visits to members who are housebound and are unable to get out and about.

After Sunday worship, the flowers are distributed to those who may be recovering from illness or celebrating a special anniversary or birthday.

Where the parents of a child baptised in St Mary's are not members, an elder will maintain a link with the family.

Each of the church organisations is allotted 2 elders who visit regularly during the year and report back to the Session.

Regular events are arranged to encourage and strengthen fellowship within the congregation eg Family quiz, Concert, Musical evenings. An Action Team will arrange these congregational fellowship events.

A group within the congregation distributes Christmas gifts to older members.

An occasional Pastoral Letter from the minister reflects on recent worship and events and helps to maintain a link for those not able to come to church regularly.

The Bulletin, produced 5 times each year, records the life of St Mary's. It is delivered to members when elders visit their districts. Recent copies can be seen on the website. The website provides an information focus about organisations and events in St Mary's for members, visitors, guests and the community.



Buildings

Over the past few years, there have been improvements made to the Church buildings. These have included a number of adaptations and redecoration, eg new heating boiler, new entrance vestibule to Avon Hall.

Planned maintenance is a feature of our property management organisation and this is implemented through a property committee and work party.

Manse



Garden View



Street View

The present Manse is a traditional detached sandstone building in good order and set in a large garden and is within walking distance of the church.

The property has full gas central heating, double glazing and a detached garage.

Downstairs the property comprises:

entrance vestibule
living room
lounge
dining room
kitchen
shower room & toilet
utility room

Upstairs provides:

master bedroom
dressing room
3 bedrooms
bathroom
study

Church House

This is home to the Church Officer and is a bungalow immediately adjacent to the Church in Avon Street.

Church Premises

Sanctuary

The sanctuary was designed by McGregor Chalmers and is built of Auchenheath sandstone. It is cruciform and in Norman style, with circular arches in the doorways, windows and over chancel. The seating capacity is 660. There is a new sound system with audioloop.

Avon Hall

- Largest hall - with stage.
- Seats approx 200
- Recently decorated
- PA system
- Disabled access

Conference Room

- Meeting area
- Seats approx 35-40

Cameron Hall

- Upstairs hall
- Laid out for badminton
- Recently decorated

Coffee Bar

- Staffed each week night by volunteers
- Seats approx 15-20
- Great meeting place for members of organisations for a "blether"

Lounge

- Seats approx 12
- Used as a small meeting area
- Gathering place for Baptismal parties, etc

In addition, there is a recently decorated vestry, a modern well appointed kitchen, a church office and modern toilet facilities.



Staff and Statistics

The work of our busy congregation and organisations is supported by a team of paid staff.

The Church Secretary looks after a busy office and processes supporting documents for worship, Session, Board, publicity and organisations.

The Organist and Choir Master meets with the choir for rehearsal mid-week and leads the worship service music. He also contributes to special services and events.

The Church Officer looks after the major cleaning of church and halls, ensuring that they are prepared and ready for services, organisations and meetings.

There is a Cleaner who ensures that all of the environs of the halls, kitchen and toilets are always clean.

In addition a Work Party of volunteers meets weekly from Easter through summer to carry out tasks such as painting and maintenance of the grounds around the church.

There are 107 elders on the Kirk Session, which meets bi-monthly.



Elders in 2013

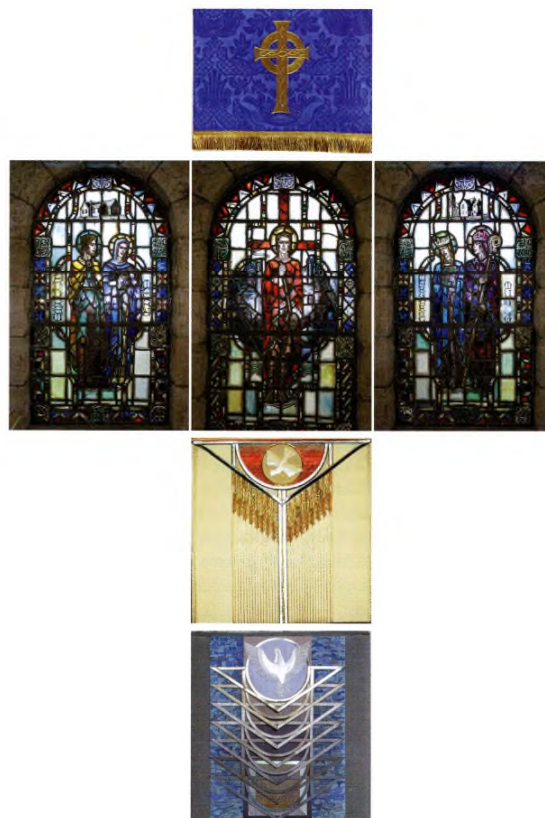


New elders ordained
in 2014

The Congregational Board has 12 elected members in addition to the elders. Its meetings alternate with the Session. The Board has sub-committees for Finance and Property. There are no other standing sub-committees. Our practice is to set up small, short-life groups, called Action Teams, to plan innovations, changes or special events.

STATISTICS FOR 2014

Membership	760
Sunday attendance	280
Baptisms	9
Marriages	4
Funerals	28 members
National Ministry and Mission	£74,956
Income	£145,614



The Call

Following a busy, exciting and successful year celebrating 100 years of worship in our lovely church, we are now looking ahead towards the next stage in our congregational development. We are proud of what we have achieved but recognise that we cannot be complacent in these rapidly changing times.

By God's grace, the building and parish of St Mary's has been a place of community, fellowship and worship and we give thanks for the many people who have contributed with their time and talents. We look forward in faith.

St Mary's is right at the heart of our parish and community and is important to us and to the people of all ages who come to share our worship and activities. We are now looking at new ways to challenge our membership's service in church life, and engagement with our parish and community. We seek a minister who will support and inspire us in these aims as we move into our second century of Christian commitment.

"Build on our past; your living stones, shape us to honour you, Lord in these days."

We trust that this profile of our church, people and parish has presented a fair picture of St Mary's. However, if you would like to come and see the church and learn more about St Mary's, please do not hesitate to contact either of the following:

Interim Moderator:

Rev Arthur Barrie
30 Airbles Crescent
MOTHERWELL
ML1 3AR

Tel: 01698 261147
email: elizabethbarrie@ymail.com

Clerk to the Nominations Committee:

Mrs Heather Greenhorn
165 Hamilton Road
Motherwell
ML1 3DW

Tel: 01698 263731
Mobile: 07838922286
Email: Hsgreenhorn@hotmail.com

Please send your application and CV to the Clerk.

Visit our website at www.stmarysmotherwell.org.uk to find out more about our church.